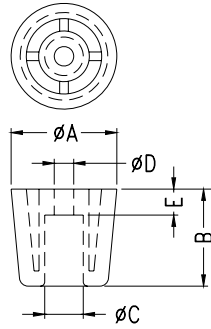


# PLASTIC FOOT

Hankook Fastener

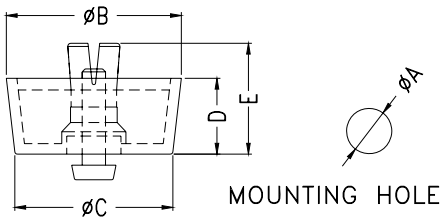
- ◆ MATERIAL:ABS
- ◆ COLOR:BLACK
- ◆ UNIT:mm



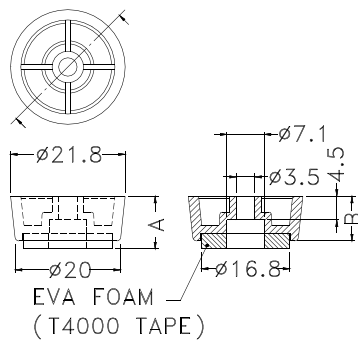
PART NO	A	B	C	D	E	PACKAGE
FFT-1	15.0	8.0	7.5	3.7	3.5	1000
FFT-2	20.0	12.1	8.2	4.1	5.5	500
FFT-3	25.1	16.2	10.4	4.3	8.1	100
FFT-4	24.4	22.4	8.9	4.6	6.0	
FFT-5	26.0	12.7	10.9	5.1	5.7	
FFT-6	22.5	22.4	8.6	4.6	6.0	
FFT-7	17.0	17.0	7.5	3.2		



- ◆ MATERIAL:=PE/TPR
- ◆ PIN MATERIAL:P.P
- ◆ COLOR:BLACK/GRAY/COMPUTER
- ◆ UNIT:mm

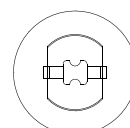
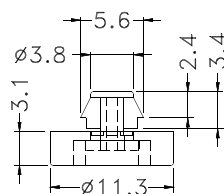


PART NO	A	B	C	D	E	CHASSIS THICKNESS	PACKAGE
FF-1	8.0	20.8	19.8	6.4	11.8	1.0~2.5	500
FF-2		20.0	18.0	10.0	15.4		
FF-3		23.7	19.5	13.7	19.2	1.0~2.5	500
FF-4		25.0	23.5	6.5	12.5		
FF-5		30.0	27.7	12.8	18.8		
FF-6	10.0	28.5	26.5	8.2	14.0	1.0~3.5	250
FF-7	5.0	12.7	12.0	4.4	8.5	1.0~2.0	1000
FF-8		15.7	15.0				
FF-9	8.0	20.0	18.6	4.0	7.0	1.0~2.5	500
FF-10		23.8	22.0	5.0	10.0		
FF-11	10.0	31.5	28.5	7.8	13.6	1.0~3.5	250
FF-12	8.0	20.0	18.0	15.0	20.8	1.0~3.0	
FF-13				18.0	24.3	0.8~1.0	
FF-14		19.5	18.7	5.0	10.5	0.8~2.0	500
FF-16	10.0	29.4	26.5	15.0	23.0	1.0~3.5	100
FF-21	8.0	20.0	19.3	20.5	25.6	0.8~2.0	250
FF-22		19.2	17.2	7.9	12.1	0.8~1.2	500
FF-24		23.0	21.0	8.0	13.3	0.8~2.0	250
FF-25		24.0	20.0	10.5	15.8		
FF-26		22.0	21.0	3.5	10.5	1.0~3.0	500
FF-27	26.7	24.8	16.0	21.0			
FF-28		20.0	18.0	10.0	13.5	0.8~2.0	250
FF-31	10.0	27.0	26.0	6.9	12.0		



- ◆ MATERIAL:ABS
- ◆ COLOR:BLACK
- ◆ UNIT:mm

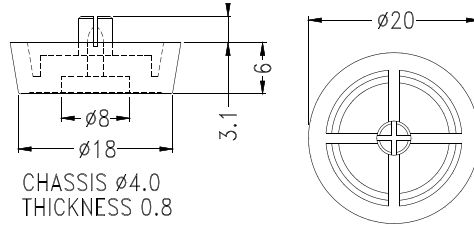
PART NO.	A	B	PACKAGE
FFS-1	10.0	8.5	500
FFS-2	15.0	13.5	



CHASSIS  $\phi 4.0$   
THICKNESS 0.8~1.0

- ◆ MATERIAL:TPE
- ◆ PIN MATERIAL:NYLON 66 (UL)94V-2
- ◆ COLOR:BLACK
- ◆ UNIT:mm

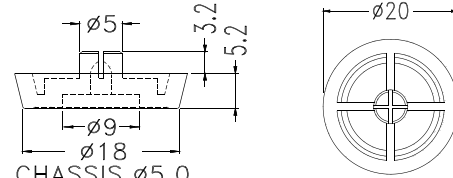
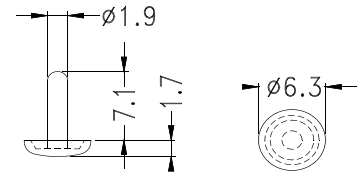
PART NO	PACKAGE
FF-15	1000



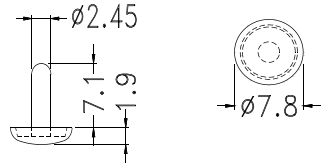
CHASSIS  $\phi 4.0$   
THICKNESS 0.8

PART NO	PACKAGE
FF-19	100

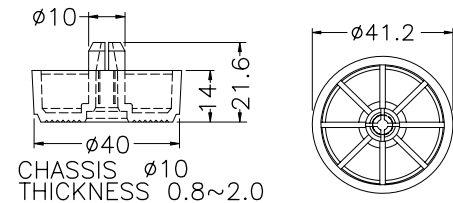
- ◆ FOOT MATERIAL: P.E
- ◆ PIN MATERIAL: NYLON 66 (UL)94V-2
- ◆ COLOR: BLACK
- ◆ UNIT: mm



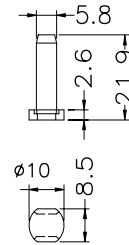
CHASSIS  $\phi 5.0$   
THICKNESS 0.8



PART NO	PACKAGE
FF-20	100

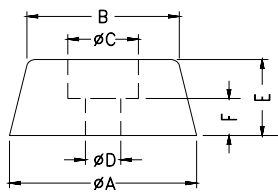


CHASSIS  $\phi 10$   
THICKNESS 0.8~2.0



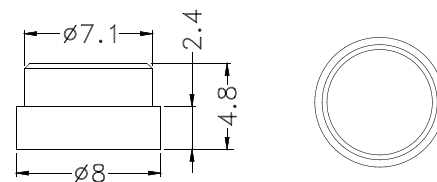
- ◆ MATERIAL: PP
- ◆ FLAME CLASS :94HB
- ◆ COLOR: BLACK
- ◆ UNIT: mm

PART NO	PACKAGE
FF-34	100



- ◆ MATERIAL: P.V.C/RUBBER/P.P
- ◆ COLOR: BLACK/WHITE
- ◆ UNIT: mm

PART NO	A	B	C	D	E	F	MATERIAL	PACKAGE
NF-001	14.8	8.0	6.0	3.0	7.0	3.1	P.V.C	1000
NF-002	11.5	8.7	5.6	3.2	7.4	3.3	RUBBER	
NF-004	16.0	13.0	6.0	3.0	7.8	4.0	RUBBER	
NF-005	17.2	16.2	9.0	4.0	7.0	3.0	P.V.C	500
NF-006	20.2	18.4	10.0	3.0	8.0	4.0		
NF-007	25.0	21.5	8.5	3.3	5.8	2.8		
NF-008	20.0	15.0	9.8	3.0	10.5	5.0	P.V.C	1000
NF-008A				4.0				
NF-009	11.0	8.8	6.0	3.5	5.7	2.3		
NF-013	18.0	13.7	7.8		9.8	2.7		
NF-014	28.0	21.2	9.7	3.8	20.0	6.0	P.V.C	100
NF-018		24.0		4.2	25.0		RUBBER	



MOUNTING HOLE  $\phi 7$

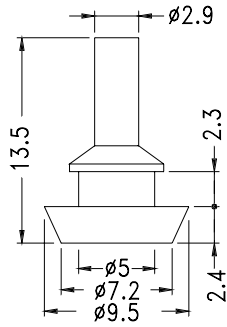
- ◆ MATERIAL: RUBBER
- ◆ COLOR: BLACK
- ◆ UNIT: mm

PART NO	PACKAGE
TF-017	1000

# PLASTIC & RUBBER FOOT

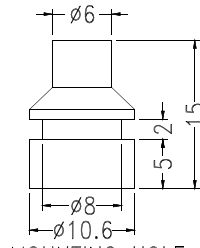
Hankook Fastener

- ◆ MATERIAL: RUBBER
- ◆ COLOR: BLACK
- ◆ UNIT: mm



MOUNTING HOLE  $\phi 5.2$

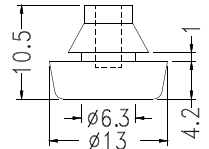
PART NO	PACKAGE
TNF-1	1000



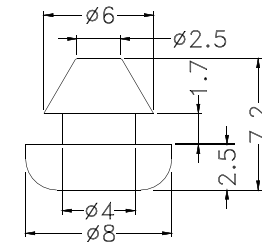
MOUNTING HOLE  $\phi 8.2$

PART NO	PACKAGE
TNF-2	1000

PART NO	PACKAGE
TNF-3	1000

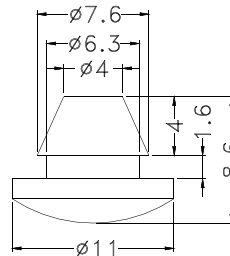


MOUNTING HOLE  $\phi 6.35$



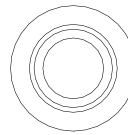
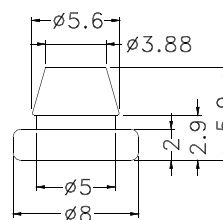
MOUNTING HOLE  $\phi 4.2$

PART NO	PACKAGE
TNF-5	1000



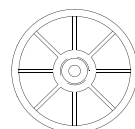
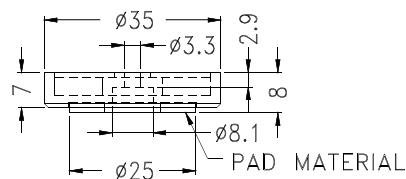
MOUNTING HOLE  $\phi 6.5$

PART NO	PACKAGE
TNF-6	2000



- ◆ MATERIAL: SILICON (UL)
- ◆ FLAME CLASS :94V-0
- ◆ COLOR: BLACK
- ◆ UNIT: mm

PART NO	PACKAGE
TNF-7	2000



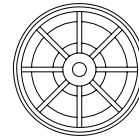
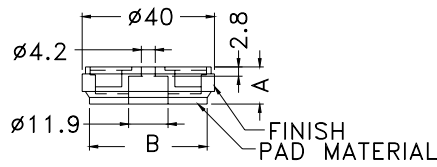
- ◆ HOUSING MATERIAL: ABS
- ◆ COLOR: BLACK
- ◆ UNIT: mm
- ◆ FFK RANGE: Without any silver/gold plated

PART NO	PAD MATERIAL
FFK-3	EVA
FFK-3P	PORON
FFK-3(RU)	RUBBER

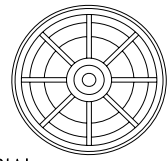
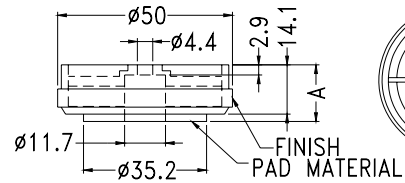
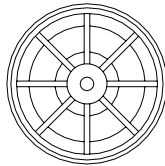
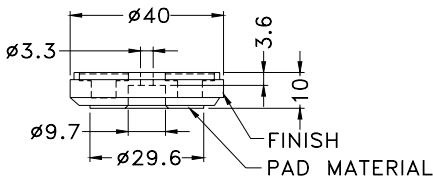
# PLASTIC & RUBBER FOOT

Hankook Fastener

- ◆ HOUSING MATERIAL: ABS
- ◆ COLOR: BLACK
- ◆ UNIT: mm

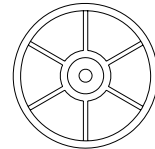
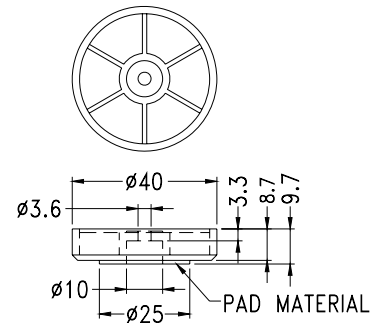
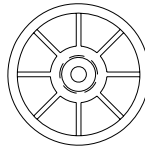
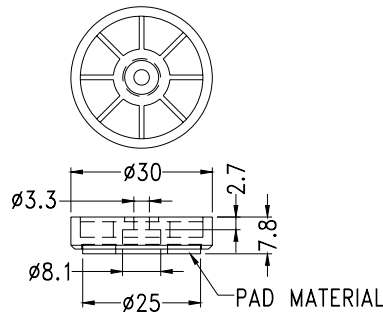


PART NO	PAD MATERIAL	A	B	FINISH
FFG-2A	EVA	10.8	35.5	GOLD PLATED
FFG-2A(RU)	RUBBER	10.2		
FFG-2A(S)	EVA	11.0	35.0	SILVER PLATED
FFG-2AS(RU)	RUBBER	10.2		



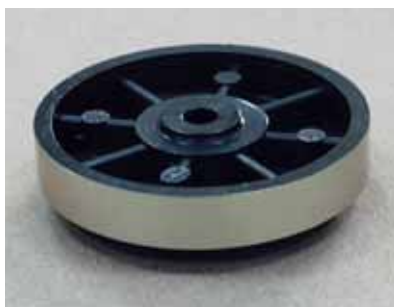
PART NO	PAD MATERIAL	A	FINISH
FFG-3A	EVA	16.2	GOLD PLATED
FFG-3A(RU)	RUBBER	15.4	
FFG-3A(S)	EVA	16.0	SILVER PLATED
FFG-3A(G)N			GOLD PLATED
FFG-3AN	EVA	16.2	
FFG-3AN(RU)	RUBBER	15.4	

PART NO	PAD MATERIAL	FINISH
FFG-2N	RUBBER	
FFG-2(S)		SILVER PLATED

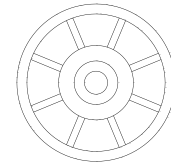
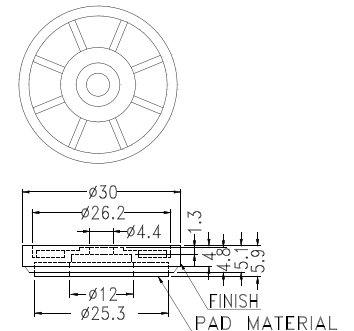
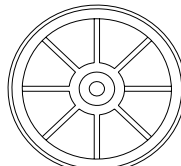
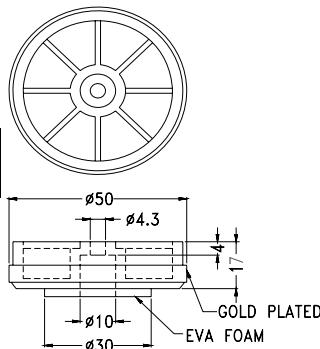


PART NO	PAD MATERIAL
FFK-1	EVA
FFK-1P	PORON
FFK-1(RU)	RUBBER

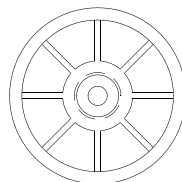
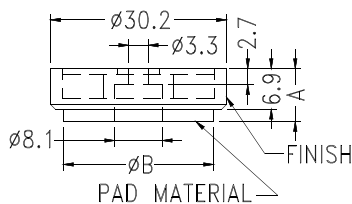
PART NO	PAD MATERIAL
FFK-2	EVA
FFK-2P	PORON
FFK-2(RU)	RUBBER



**PART NO**  
FFG-3



PART NO	PAD MATERIAL	FINISH
FFG-30(S)	EVA	SILVER PLATED

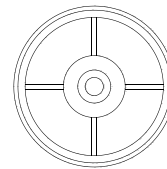
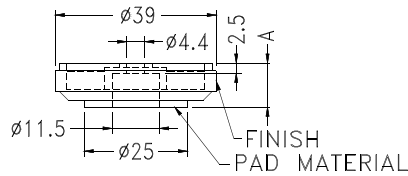
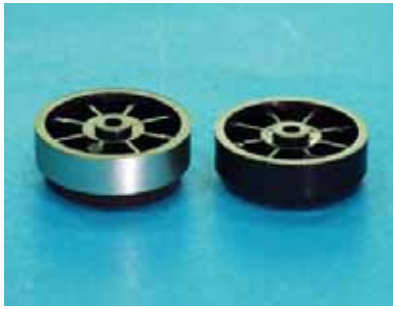


PART NO	A	B	PAD MATERIAL	FINISH
FFG-1	9.0	25.8	EVA	SILVER PLATED
FFG-1(RU)			RUBBER	SILVER PLATED
FFG-1G(RU)	8.0	25.0		GOLD PLATED
FFG-1N*				SILVER PLATED

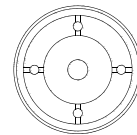
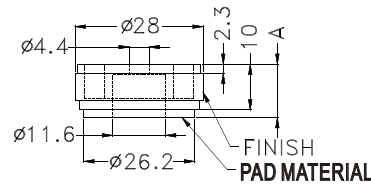
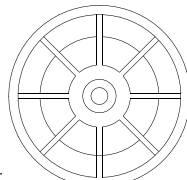
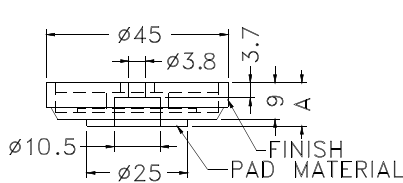
# PLASTIC & RUBBER FOOT

Hankook Fastener

- ◆ HOUSING MATERIAL:ABS
- ◆ COLOR:BLACK
- ◆ UNIT:mm

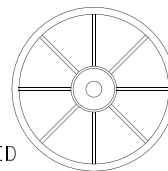
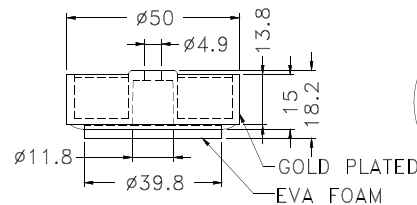
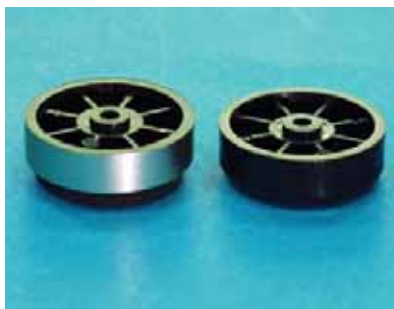


PART NO	A	PAD MATERIAL	FINISH
RS-40	10.7	EVA	GOLD PLATED
RS-40(S)			SILVER PLATED
RS-40S(RU)	9.8	RUBBER	



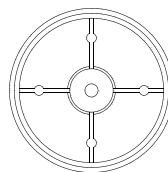
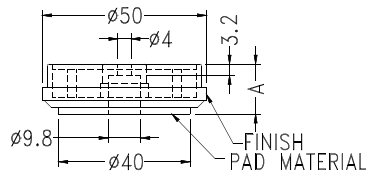
PART NO	A	PAD MATERIAL	FINISH
RS-45	10.7	EVA	GOLD PLATED
RS-45(S)			SILVER PLATED
RS-45(RU)	9.7	RUBBER	GOLD PLATED
RS-45S(RU)			SILVER PLATED
RS-45(S)I			SILICON RUBBER

PART NO	A	PAD MATERIAL	FINISH
RS-28	11.7	EVA	GOLD PLATED
RS-28(S)			SILVER PLATED
RS-28S(RU)	10.7	RUBBER	
RS-28N(RU)			
RS-28(N)N	10.0		

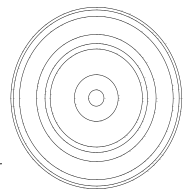
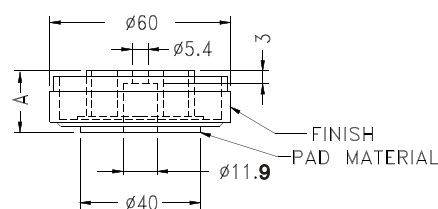
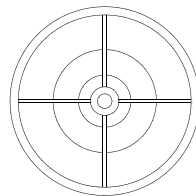
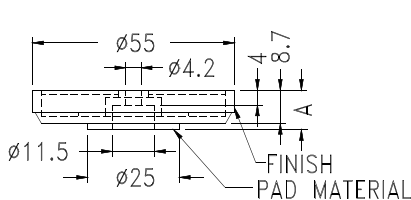


- ◆ HOUSING MATERIAL:ABS
- ◆ COLOR:BLACK
- ◆ UNIT:mm

PART NO
RS-50-2



PART NO	A	PAD MATERIAL	FINISH
RS-50	14.8	EVA	GOLD PLATED
RS-50(RU)	14.0	RUBBER	
RS-50N	14.8	EVA	
RS-50N(RU)	14.0	RUBBER	
RS-50(S)	14.8	EVA	SILVER PLATED
RS-50S(RU)	14.0	RUBBER	



PART NO	FINISH	PAD MATERIAL	A
RS-55	GOLD PLATED	EVA	10.7
RS-55(S)	SILVER PLATED		
RS-55S(RU)		RUBBER	9.7

PART NO	A	PAD MATERIAL	FINISH
RS-60N	20.0	EVA	GOLD PLATED
RS-60			鍍黑灰色
RS-60(S)			SILVER PLATED
RS-60(S)RU	19.3	RUBBER	